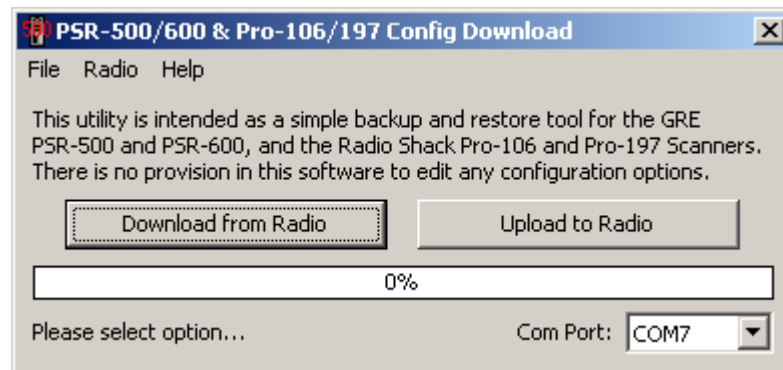


# PSR500DL



## Program Manual Version 1.01

Printed January 21, 2009  
Copyright 2009, Michael Vander Veer

## Welcome:

Welcome and thank you for downloading the PSR500DL utility. This free utility will allow you to download or upload an image the scanner configuration of the following radios:

GRE PSR-500  
GRE PSR-600  
Radio Shack Pro-106  
Radio Shack Pro-197

The data is stored as an exact image of the scanner memory, and is the same format as the files used by PSREdit500.

Please be aware that PSR500DL provides no method to change anything in the downloaded configuration. This utility is intended only as a backup and restore package for the supported radios. If you want to be able to edit the configuration of your radio, please try one of the software packages that are available for this purpose.

## Requirements:

Before you may use this software, you must have either the Radio Shack USB Scanner cable (Catalog number 20-047) or the GRE USB Scanner cable (Part Number 30-3290, available from <http://www.greamerica.com>) installed and working on your computer.

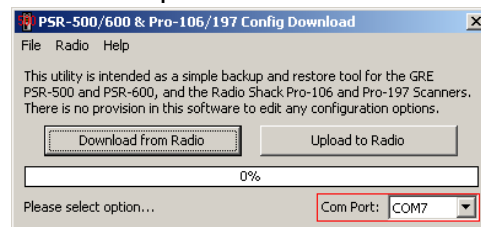
Note: If you are using the Radio Shack USB cable, do not use the short 3" adapter cable that comes with it. These scanners do not need the adapter and will not work with it in line.

## Getting Started:

When PSR500DL starts, the program will scan for all available serial ports on your computer. For best results, it is recommended that the USB serial cable be plugged in when this program is started.

If the USB cable is not available when PSR500DL is started, you can force the program to rescan the ports using the "Re-Scan Ports" option located in the File menu.

Once the USB cable serial port has been determined, select the correct port in the pull down list in the lower right corner of the program.

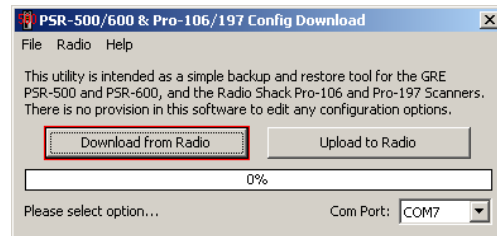


## Downloading your scanner's configuration:

Downloading refers to the transfer of data from a remote device to your computer, in this case, the remote device is your scanner.

To download your configuration from your scanner to your computer, click on the "Download from Radio" button, or select the option from the Radio menu.

Once selected, you will be prompted for a file name and location for the file to hold the scanner's configuration. If the file selected already exists, you will be prompted to confirm that you want to overwrite the existing file before the download will begin.



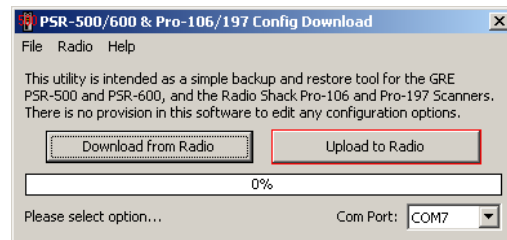
At this point, the program will send the command needed to have the radio begin to send the scanner's configuration to the computer. The progress bar in the center of the screen should show the progress of the download.

When the download is complete, the data will be saved to the file you selected and the program will return to the ready state.

## Uploading your Configuration:

Uploading refers to the transfer of data from your computer to a remote device. In this case, the remote device is your scanner.

To upload a stored configuration to your scanner, click on the "Upload to Radio" button, or the same option in the Radio menu.



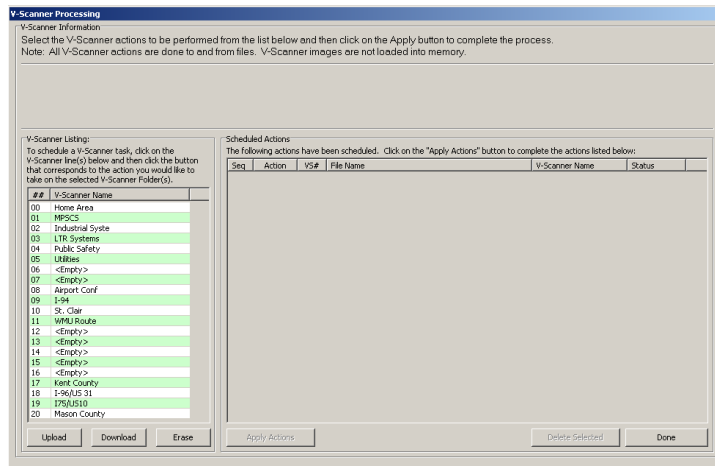
The radios supported by this program work in complete configurations of the scanner.

It is not possible to upload partial configurations, or to add to the configuration that is already in the scanner. For this reason, PSR500DL will by default present a warning message when the upload option is selected to warn you that you are about to overwrite the current configuration of your scanner with new data. This warning may be suppressed by selecting the "Suppress Upload Warning" option located in the Help menu.

## Working with V-Scanner Folders:

Version 1.01 of PSR500DL adds the ability to work with the V-Scanner feature of the supported radios. This feature allows you to store up to 21 complete scanner configurations, any of which may be loaded into working memory with just a few key presses on the scanner’s keypad.

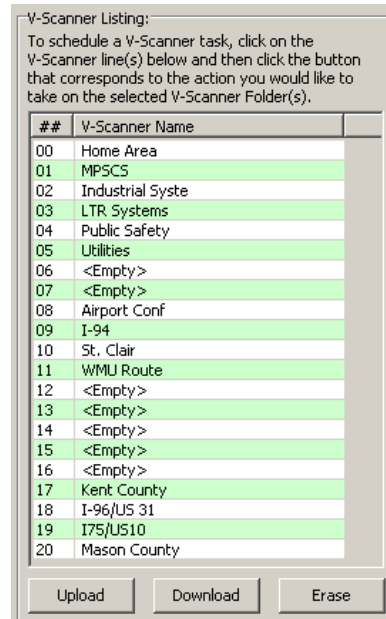
To access the V-Scanner screen, connect your scanner to the computer using the USB cable and turn it on. Then select the Radio menu, and then the “Access V-Scanner Data” option. Once selected, a screen similar to this should appear:



On the left side of this screen, will be a listing of the current contents of the V-Scanner folders on your radio. Below this list are three buttons used to “Schedule” an action on a V-Scanner folder. Any number of V-Scanner actions may be scheduled, and will be performed when the Apply Action button is clicked.

To schedule an action, select the V-Scanner folder or folders you want to work with, and then click on the Upload, Download, or Erase buttons. You will be prompted as needed for each V-Scanner folder selected.

Note: Nothing is actually changed in the radio until the “Apply Actions” button is clicked.



**Upload:**

When you click on the Upload button, you will be prompted first for a .bin format file to be placed in the selected location. Once the file is selected, the text from line 4 of the display will be shown on the screen. This is the default text used to describe the contents of the V-Scanner folder once uploaded. You can change this text to anything you want up to 16 characters in length.

**Download:**

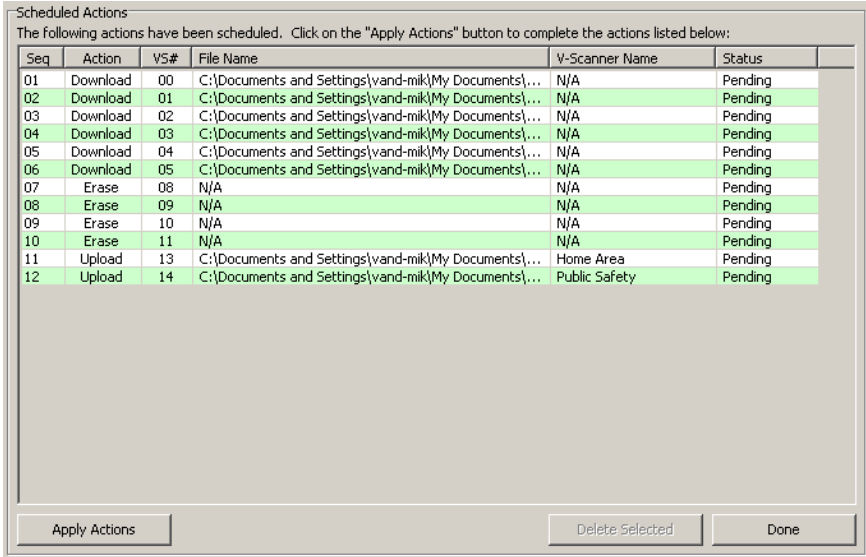
When you click on the Download button, PSR500DL will prompt you for a file name to save the downloaded configuration into. Any previous scheduled actions on this V-Scanner folder will be cancelled and removed from the list.

**Erase:**

When you click on the Erase button, a confirmation screen will appear for each selected V-Scanner folder. Click the Yes button on each to confirm that you want to erase the folder. Note: You do not need to perform an erase action before uploading a new configuration. To replace an existing V-Scanner folder, simply use the Upload option directly.

### The Scheduled Actions Screen:

Once actions have been scheduled for the selected V-Scanner folders, the Scheduled actions screen should look something like this:



All actions to be performed will be listed on this screen. To remove an action, click on the desired line, and then click on the Delete Selected button. To perform the actions listed, click on the "Apply Actions" button. Progress indicators will appear at the top of the screen, and the status column will change from Pending to Completed as each action is done.

### Exiting from the V-Scanner Function:

Once you have completed all of the V-Scanner actions, click on the "Done" button to exit the screen and return you to the main PSR500DL screen.

### Checking for Updates:

PSR500DL provides a quick and easy way to check to see if any updates to the program are available.

From the Help menu, select the "Check for Updates" option. If a newer version is available, you will be asked if you would like to visit the PSREdit.com web site to download the new version.

If there is not an update available, you will be notified by a small message box.